



NOTES
THIS DRAWING IS THE COPYRIGHT © OF TURNER. NO REPRODUCTION WITHOUT PERMISSION. UNLESS NOTED OTHERWISE THIS DRAWING IS NOT FOR CONSTRUCTION. ALL DIMENSIONS AND LEVELS ARE TO BE CHECKED ON SITE PRIOR TO THE COMMENCEMENT OF WORK. IF ANY DISCREPANCIES FOR CLARIFICATION BEFORE PROCEEDING WITH WORK. DRAWINGS ARE NOT TO BE SCALED. USE ONLY DIMENSIONS PROVIDED. REFER TO CONSULTANT DOCUMENTATION FOR FURTHER INFORMATION.

DL25 Quality Endorsed Company ISO 9001:2008, Registration Number 28475
Notified Architect: Nicholas Turner, 8895, ABA 88 064 084 911

KEY PLAN

LEGEND

LEGEND

- Westmead Railway Station
- Future Light Rail Station
- T-Way Bus Stop
- Lobby Entry
- Carpark Entry
- Lot 4 Site Boundary
- Existing Tree to be Removed

Rev.	Date	Approved by	Revision Notes
S	22.12.16	JM	Development Application
U	03.07.17	JM	Development Application Amendments
V	31.05.17	JM	Development Application Amendments
W	04.10.17	JM	Development Application Amendments
X	10.10.17	JM	Development Application Amendments

CLIENT
Deicorp
Level 3, 161 Redfern Street, Redfern
NSW 2016, Australia

Project Title
WSU - Lot 4
158-164 Hawkesbury Road, 2a Darcy Road Westmead NSW 2145 Australia

Drawing Title

Site Plan

Site Plan

Scale 1:500 @A1, 50% @A3	Project No. 16001	Drawn by turner	North
Status For Information	Dwg No. DA-100-020	Rev X	

TURNER

L7, ONE Oxford Street
Darlington NSW 2010
Australia
T +61 2 8668 0000
F +61 2 8668 0088
turner@turner.com.au

Visitors:	39
Accessible:	25
Residential:	19

Visitors:	39
Accessible:	25
Residential:	19

Total: 83

LOT 3

➡ **Lot 4 B1 Carpark**
A: 4,040.93 m²
83 spaces
BL 25.700

GENERAL ARRANGEMENT PLANS LEGEND		
NOTE: WHITE UNFILLED OR DRAWING OR SCHEDULES A NUMERICAL SUFFIX INDICATES MATTER TYPE I, II BAL-BALUSTRAE TYPE I, II REFER TO ARCHITECTURAL SCHEDULES FOR FURTHER INFORMATION		
AC	Ice Conditioning	STUDIO
ACC	Accessories	
ADP	Adaptable	
AHD	Automated Height Demand	1 BEDROOM UNIT
B	Bottom	
BI-2	Bedroom 1, Bedroom 2, etc.	2 BEDROOM UNIT
BAL	Balustrade	
BWP	Boundary Parking	
BKS	Bicycle Storage	3 BEDROOM UNIT
BKS	Bicycle Storage	
BY	Battery	LOBBY AREAS
CL	Central Line	
CLNR	Clearance	LOBBY ENTRY
CCN	Column	
COMS	Communications Services	LOBBY ENTRY
CSG	Check-in Sign	
CPE	Car Park Exhaust	CARPARK ENTRY
CP	Car Park	
CYP	Cyber Café	EXISTING TREE TO BE REMOVED
CPT	Cyber Café	
CW	Car Wash Bay	EXISTING TREE TO BE REMOVED
CW	Car Wash Bay	
D	Drinking	EXISTING TREE
DW	Drinking Water	
DRY	Drying	PROPOSED TREE
DW	Drinking Water	
E	Entrance	SILVER LEAF/LARGE UNIT
ELEC	Electrical Services	
ENT	Entrance	ADAPTABLE UNIT
ENT	Entrance	
F	Fire Services	ADAPTABLE UNIT
FEL	Fire Escape	
FL	Fire Ladder	RELATIVE LEVEL - TO +0.0
FL	Fire Ladder	

CLIENT
Deicorp
Level 3, 161 Redfern Street, Redfern
NSW 2016, Australia

TURNER L7, ONE Oxford Street T +61 2 8968 0000
 Darlinghurst NSW 2010 F +61 2 8968 0088
 Australia turnersradio.com.au

B2 CARPARK

Residential: 106

Total: 106

LOT 3

Lot 4 B2 Carpark
A: 4,271.00 m²
106 spaces
RL 22.700

NOTES
THIS DRAWING IS THE COPYRIGHT © OF TURNER. NO REPRODUCTION WITHOUT PERMISSION. UNLESS NOTED OTHERWISE THIS DRAWING IS NOT FOR CONSTRUCTION. ALL DIMENSIONS AND LEVELS ARE TO BE CHECKED ON SITE PRIOR TO THE COMMENCEMENT OF WORK. IN THE EVENT OF ANY DISCREPANCIES FOR CLARIFICATION BEFORE PROCEEDING WITH WORK. DRAWINGS ARE NOT TO BE SCALED. USE ONLY PROVIDED DIMENSIONS. REFER TO CONSULTANT DOCUMENTATION FOR FURTHER INFORMATION.

DL225 Quality Endorsed Company ISO 9001:2008, Registration Number 25475
Notified Architect: Nicholas Turner, 8895, AEN 88 064 084 911

Thermal Comfort Specification		
Building Element	Material	Insulation
External Wall	Cavity Brick, Brick-Veneer, Concrete, Hefel	None, R1.0, R1.5*
Internal Wall	Plasterboard on Stud	None
Roof	Concrete	None
Ceiling	Concrete above Plasterboard	None, R2.5*
Floor	Concrete Slab	None, 0.5, 1.0*
Floor Coverings	Carpet to Living and Bedrooms	N/A
	Tiles to Bathrooms and Kitchens	N/A
Windows	Group A Glazed Systems:	N/A
	U-value = 6.7 & SHGC = 0.57, U-value = 5.4 & SHGC = 0.49*	
	Group B Glazed Systems:	
	U-value = 6.7 & SHGC = 0.70, U-value = 5.4 & SHGC = 0.58*	
Draught seals to all external windows and doors		

Note: *Please refer to the BASIX Report for the individual insulation requirements of each residential dwelling.

LEGEND

GENERAL ARRANGEMENT PLANS LEGEND
NOTE: WHERE NOMINATED ON DRAWINGS OR SCHEDULES
A NUMERICAL SUFFIX INDICATES MULTIPLE TYPES (E
BALCONY/STAIRCASE TYPE 1, ETC.) REFER TO
ARCHITECTURAL SCHEDULES FOR FURTHER INFORMATION

- STUDIO
- 1 BEDROOM UNIT
- 2 BEDROOM UNIT
- 3 BEDROOM UNIT
- LOBBY AREAS
- LOBBY ENTRY
- CARPARK ENTRY
- EXISTING TREE TO BE REMOVED
- EXISTING TREE
- PROPOSED TREE
- SILVER LEVEL LIVABLE UNIT
- ADAPTABLE UNIT
- RELATIVE LEVEL - TO AHD



Certificate no.: 0001716160
Assessor Name: Tien Thien Huynh
Accreditation no.: 20887
Certificate date: 24 July 2017
Average star rating: 5.9
NATIONWIDE HOUSE
WESTMEAD, NSW 2145
www.nathers.gov.au

Rev.	Date	Approved by	Revision Notes
S	22.12.16	JM	Development Application
T	22.05.17	JM	Development Application Amendments
U	03.07.17	JM	Development Application Amendments
V	14.07.17	JM	Development Application Amendments

CLIENT
Deicorp
Level 3, 161 Redfern Street, Redfern
NSW 2016, Australia

Project Title
WSU - Lot 4
158-164 Hawkesbury Road, 2a Darcy Road Westmead NSW 2145 Australia

Drawing Title
GA Plans
Basement 02

Scale
1:200 @A1, 50%@A3
For Information

Project No.
16001

Drawn by
turner

Dwg No.
DA-105-B02

Rev
V

North
↑

TURNER
L7, ONE Oxford Street
Darlinghurst NSW 2010
Australia
T +61 2 8668 0000
F +61 2 8668 0088
www.turner.com.au

B3 CARPARK

Residential: 106

Total: 106

LOT 3

Lot 4 B3 Carpark
A: 4,271.00 m²
106 spaces
RL 19.700

NOTES
THIS DRAWING IS THE COPYRIGHT © OF TURNER. NO REPRODUCTION WITHOUT PERMISSION. UNLESS NOTED OTHERWISE THIS DRAWING IS NOT FOR CONSTRUCTION. ALL DIMENSIONS AND LEVELS ARE TO BE CHECKED ON SITE PRIOR TO THE COMMENCEMENT OF WORK. IF ANY DISCREPANCIES OR DISCREPANCIES FOR CLARIFICATION BEFORE PROCEEDING WITH WORK. DRAWINGS ARE NOT TO BE SCALED. USE ONLY PROVIDED DIMENSIONS. REFER TO CONSULTANT DOCUMENTATION FOR FURTHER INFORMATION.

DL25 Quality Endorsed Company ISO 9001:2008, Registration Number 25475
Notified Architect: Nicholas Turner, 8885, AEN 88 064 084 911

Thermal Comfort Specification		
Building Element	Material	Insulation
External Wall	Cavity Brick, Brick-Veneer, Concrete, Hefel	None, R1.0, R1.5*
Internal Wall	Plasterboard on Stud	None
Roof	Concrete	None
Ceiling	Concrete above Plasterboard	None, R2.5*
Floor	Concrete Slab	None, 0.5, 1.0*
Floor Coverings	Carpet to Living and Bedrooms	N/A
	Tiles to Bathrooms and Kitchens	N/A
Windows	Group A Glazed Systems:	N/A
	U-value = 6.7 & SHGC = 0.57, U-value = 5.4 & SHGC = 0.49*	
	Group B Glazed Systems:	
	U-value = 6.7 & SHGC = 0.70, U-value = 5.4 & SHGC = 0.58*	
Draught seals to all external windows and doors		

Note: *Please refer to the BASIX Report for the individual insulation requirements of each residential dwelling.

LEGEND
GENERAL ARRANGEMENT PLANS LEGEND
NOTE: WHERE NOMINATED ON DRAWINGS OR SCHEDULES
A NUMERICAL SUFFIX INDICATES MULTIPLE TYPES (E.G. BALCONY TYPE 1, ETC.) REFER TO ARCHITECTURAL SCHEDULES FOR FURTHER INFORMATION

- STUDIO
- 1 BEDROOM UNIT
- 2 BEDROOM UNIT
- 3 BEDROOM UNIT
- LOBBY AREAS
- LOBBY ENTRY
- CARPARK ENTRY
- EXISTING TREE TO BE REMOVED
- EXISTING TREE
- PROPOSED TREE
- SILVER LEVEL LIVABLE UNIT
- ADAPTABLE UNIT
- RELATIVE LEVEL - TO AHD



Certificate no.: 0001716160
Assessor Name: Thien Thien Huynh
Accreditation no.: 20987
Certificate date: 24 July 2017
Average star rating: 5.9
NATIONWIDE HOUSE
WESTMEAD, NSW 2145
www.nathers.gov.au

Rev.	Date	Approved by	Revision Notes
S	22.12.16	JM	Development Application
T	22.05.17	JM	Development Application Amendments
U	03.07.17	JM	Development Application Amendments
V	14.07.17	JM	Development Application Amendments

CLIENT
Deicorp
Level 3, 161 Redfern Street, Redfern
NSW 2016, Australia

Project Title
WSU - Lot 4
158-164 Hawkesbury Road, 2a Darcy Road Westmead NSW 2145 Australia

Drawing Title
GA Plans
Basement 03
Scale
1:200 @A1, 50%@A3
Project No.
16001
Dwg No.
DA-105-B03
Drawn by
turner
Rev
V
North
↑

TURNER
L7, ONE Oxford Street
Darlington NSW 2010
Australia
T +61 2 8668 0000
F +61 2 8668 0088
www.turner.com.au

B4 CARPARK

Residential: 71

Total: 71

LOT 3

Lot 4 B4 Carpark
A: 2,921.90 m²
71 spaces
RL 16.700

NOTES
THIS DRAWING IS THE COPYRIGHT © OF TURNER. NO REPRODUCTION WITHOUT PERMISSION. UNLESS NOTED OTHERWISE THIS DRAWING IS NOT FOR CONSTRUCTION. ALL DIMENSIONS AND LEVELS ARE TO BE CHECKED ON SITE PRIOR TO THE COMMENCEMENT OF WORK. IN THE EVENT OF ANY DISCREPANCIES FOR CLARIFICATION BEFORE PROCEEDING WITH WORK. DRAWINGS ARE NOT TO BE SCALED. USE ONLY PROVIDED DIMENSIONS. REFER TO CONSULTANT DOCUMENTATION FOR FURTHER INFORMATION.

DL25 Quality Endorsed Company ISO 9001:2008, Registration Number 25475
Notified Architect: Nicholas Turner, 8895, AEN 88 064 084 911

Thermal Comfort Specification		
Building Element	Material	Insulation
External Wall	Cavity Brick, Brick-Veneer, Concrete, Hefel	None, R1.0, R1.5*
Internal Wall	Plasterboard on Stud	None
Roof	Concrete	None
Ceiling	Concrete above Plasterboard	None, R2.5*
Floor	Concrete Slab	None, 0.5, 1.0*
Floor Coverings	Carpet to Living and Bedrooms	N/A
	Tiles to Bathrooms and Kitchens	N/A
Windows	Group A Glazed Systems:	N/A
	U-value = 6.7 & SHGC = 0.57, U-value = 5.4 & SHGC = 0.49*	
	Group B Glazed Systems:	
	U-value = 6.7 & SHGC = 0.70, U-value = 5.4 & SHGC = 0.58*	
Draught seals to all external windows and doors		

Note: *Please refer to the BASIX Report for the individual insulation requirements of each residential dwelling.

LEGEND
GENERAL ARRANGEMENT PLANS LEGEND
NOTE: WHERE NOMINATED ON DRAWINGS OR SCHEDULES
A NUMERICAL SUFFIX INDICATES MULTIPLE TYPES (E
BALCONY/STAIRCASE TYPE 1, ETC. REFER TO
ARCHITECTURAL SCHEDULES FOR FURTHER INFORMATION

- STUDIO
- 1 BEDROOM UNIT
- 2 BEDROOM UNIT
- 3 BEDROOM UNIT
- LOBBY AREAS
- LOBBY ENTRY
- CARPARK ENTRY
- EXISTING TREE TO BE REMOVED
- EXISTING TREE
- PROPOSED TREE
- SILVER LEVEL LIVABLE UNIT
- ADAPTABLE UNIT
- RELATIVE LEVEL - TO AHD



Certificate no.: 0001716160
Assessor Name: Thong Thien Huynh
Accreditation no.: 20887
Certificate date: 24 July 2017
Dwelling Address: WSU WESTMEAD, NSW 2145
www.nathans.gov.au
www.nathans.gov.au

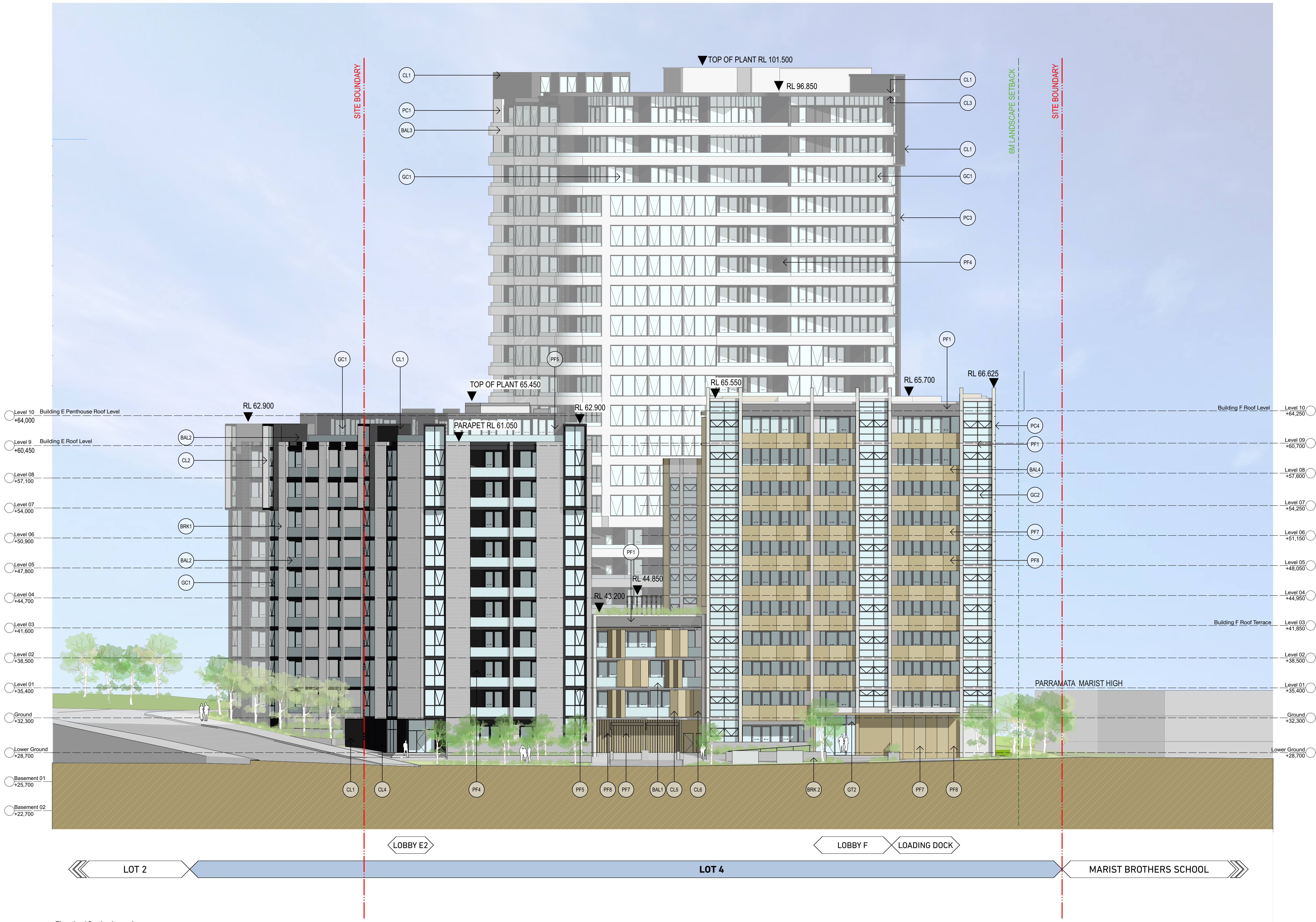
Rev.	Date	Approved by	Revision Notes
S	22.12.16	JM	Development Application
T	22.05.17	JM	Development Application Amendments
U	03.07.17	JM	Development Application Amendments
V	14.07.17	JM	Development Application Amendments

CLIENT
Deicorp
Level 3, 161 Redfern Street, Redfern
NSW 2016, Australia

Project Title
WSU - Lot 4
158-164 Hawkesbury Road, 2a Darcy Road Westmead NSW 2145 Australia

Drawing Title
GA Plans
Basement 04
Scale
1:200 @A1, 50%@A3
Status
For Information
Project No.
16001
Dwg No.
DA-105-B04
Drawn by
turner
Rev
V
North
↑

TURNER
L7, ONE Oxford Street
Darlinghurst NSW 2010
Australia
T +61 2 8668 0000
F +61 2 8668 0088
www.turner.com.au



Elevation / Section Legend

- BAL1** Balustrade Type 1:
Semi-Frameless clear glass balustrade.
Framing system, finish similar to PF1
- BAL2** Balustrade Type 2:
Semi-Frameless translucent glass balustrade.
Framing system, finish similar to PF5
- BAL3** Balustrade Type 3:
Semi-Frameless clear glass balustrade fixed to
solid spandrel panel/parapet wall. Framing system,
finish similar to PF1
- BAL4** Balustrade Type 4:
Perforated Architectural metal balustrade. Finish similar to
PF7 + PF8
- BAL5** Balustrade Type 5:
Fixed vertical metal fins. Finish similar to PF8

- BRK1** Brick Type 1:
Face brick similar in colour to Bowral 'Chillingham White'
- BRK2** Brick Type 2:
Glazed face brick to address landscaped areas
Colour similar to Austral Bricks 'Allure-Lulu'
- COF1** Concrete, off form
Clear finish or to landscape architect's specification
- GC1** Glass, Clear, Type 1:
Glass, clear, to Basix and Acoustic report requirements.
Aluminium framing system, finish similar to PF5
- GC2** Glass, Clear, Type 2:
Glass, clear, to Basix and Acoustic report requirements.
Aluminium framing system, finish similar to PF3
- CL1** Cladding Type 1:
Metal cladding, colour similar to PF5

- CL2** Cladding Type 2:
Metal cladding, colour similar to PF2
- CL3** Cladding Type 3:
Glazed face brick to address landscaped areas
Colour similar to Austral Bricks 'Allure-Lulu'
- CL4** Cladding Type 4:
FC cladding, colour similar to PF4
- CL5** Cladding Type 5:
Metal cladding, colour similar to PF8
- CL6** Cladding Type 6:
Metal cladding, colour similar to PF7
- GT1** Glass, Translucent, Type 1:
Glass, Translucent, to Basix and Acoustic report requirements.
Aluminium framing system, finish similar to PF5

- GT2** Glass, Translucent, Type 2:
Glass, Translucent, to Basix and Acoustic report requirements.
Aluminium framing system, finish similar to PF3
- GCB1** Glass, Colourback, Type 1:
Glass, Dark Grey, to Basix and Acoustic report requirements.
Aluminium framing system, finish similar to PF5
- GCB2** Glass, Colourback, Type 2:
Glass, Dark Grey, to Basix and Acoustic report requirements.
Aluminium framing system, finish similar to PF3
- LV1** Louvre Type 1:
Fixed vertical louvre system. Aluminium, finish similar to PF2
- LV2** Louvre Type 2:
Fixed vertical louvre system. Aluminium, finish similar to PF5
- LV3** Louvre Type 3:
Fixed vertical louvre system. Aluminium, finish similar to PF8

- PC1** Precast Concrete Type 1:
Precast Concrete. Finish: penetrating low maintenance
stain finish equal to Keim concrete Lasur system, similar to PF1
- PC2** Precast Concrete Type 2:
Precast Concrete. Finish: penetrating low maintenance
stain finish equal to Keim concrete Lasur system, similar to PF4
- PC3** Precast Concrete Type 3:
Vertical Profiled Precast Concrete. Finish: penetrating low maintenance
stain finish equal to Keim concrete Lasur system, similar to PF1
- PC4** Precast Concrete Type 4:
Natural Concrete. Finish with horizontal dummy joints
- PF1** Paint Finish Type 1:
Natural White
Finish similar to Dulux 'Natural White'
- PF2** Paint Finish Type 2:
Finish similar to Dulux 'Flat White' powder coat

- PF3** Paint Finish Type 3:
Finish similar to Dulux 'Flooded Gum'
- PF4** Paint Finish Type 4:
Finish similar to Dulux 'Black Caviar'
- PF5** Paint Finish Type 5:
Finish similar to Dulux powder coat 'Black Ace'
- PF6** Paint Finish Type 6:
Finish similar to Dulux 'Harold'
- PF7** Paint Finish Type 7:
Finish similar to Dulux Electro 'scintillation' powder coat
- PF8** Paint Finish Type 8:
Finish similar to Dulux Electro 'Shimmering
Champagne' powder coat

- SC1** Screen Type 1:
Aluminium slat fence, finish similar to PF2
- SC2** Screen Type 2:
Metal louvered screen at mechanical
air intake. Colour to match PF5
- SC3** Screen Type 3:
Metal framed shedding structure with timber battens
- SC4** Screen Type 4:
Vertical aluminium screen, finish to match PF5
- SC5** Screen Type 5:
Metal louvered screen at mechanical
air intake. Colour to match PF1
- SC6** Screen Type 6:
Metal louvered screen at mechanical
air intake. Colour to match PF6

NOTES
THIS DRAWING IS THE COPYRIGHT © OF TURNER. NO REPRODUCTION WITHOUT PERMISSION. UNLESS NOTED OTHERWISE THIS
DRAWING IS NOT FOR CONSTRUCTION. ALL DIMENSIONS AND LEVELS ARE TO BE CHECKED ON SITE PRIOR TO THE COMMENCEMENT
OF WORK. INFORM TURNER OF ANY DISCREPANCIES FOR CLARIFICATION BEFORE PROCEEDING WITH WORK. DRAWINGS ARE NOT TO
BE SCALED. USE ONLY PROVIDED DIMENSIONS. REFER TO CONSULTANT DOCUMENTATION FOR FURTHER INFORMATION.

DL25 Quality Endorsed Company ISO 9001:2015, Registration Number 25475
Notified Architect: Nicholas Turner, 8885, ABN 88 064 084 911

Thermal Comfort Specification		
Building Element	Material	Insulation
External Wall	Cavity Brick, Brick-Veneer, Concrete, Hefel	None, R1.0, R1.5*
Internal Wall	Plasterboard on Stud	None
Roof	Concrete	None
Ceiling	Concrete above Plasterboard	None, R2.5*
Floor	Concrete Slab	None, 0.5, 1.0*
Floor Coverings	Carpet to Living and Bedrooms Tiles to Bathrooms and Kitchens	N/A
Windows	Group A Glazed Systems: U-value = 6.7 & SHGC = 0.57, U- value = 5.4 & SHGC = 0.49*	N/A
	Group B Glazed Systems: U-value = 6.7 & SHGC = 0.70, U- value = 5.4 & SHGC = 0.58*	

Draught seals to all external windows and doors
Note: *Please refer to the BASIX Report for the individual insulation requirements of each
residential dwelling.

LEGEND



Certificate no.: 0001716160
Assessor Name: Tien Thien Huynh
Accreditation no.: 20987
Certificate date: 24 July 2017
Dwelling Address: WSU WESTMEAD, NSW 2145
www.nathers.gov.au

Rev.	Date	Approved by	Revision Notes
S	22.12.16	JM	Development Application
T	22.05.17	JM	Development Application Amendments
U	03.07.17	JM	Development Application Amendments
V	31.08.17	JM	Development Application Amendments

CLIENT
Deicorp
Level 3, 161 Redfern Street, Redfern
NSW 2016, Australia

Project Title
WSU - Lot 4
158-164 Hawkesbury Road, 2a Darcy Road Westmead NSW 2145 Australia
Drawing Title
**GA Elevations
North Elevation**
Scale
1:200 @A1, 50% @A3
Status
For Information
Project No.
16001
Dwg No.
DA-210-001
Drawn by
turner
Rev
V

TURNER

L7, ONE Oxford Street
Darlinghurst NSW 2010
Australia
T +61 2 8558 0200
F +61 2 8558 0208
www.turner.com.au

NOTES
THIS DRAWING IS THE COPYRIGHT © OF TURNER. NO REPRODUCTION WITHOUT PERMISSION. UNLESS NOTED OTHERWISE THIS DRAWING IS NOT FOR CONSTRUCTION. ALL DIMENSIONS AND LEVELS ARE TO BE CHECKED ON SITE PRIOR TO THE COMMENCEMENT OF WORK. IN THE EVENT OF ANY DISCREPANCIES FOR CLARIFICATION BEFORE PROCEEDING WITH WORK. DRAWINGS ARE NOT TO BE SCALED. USE ONLY PROVIDED DIMENSIONS. REFER TO CONSULTANT DOCUMENTATION FOR FURTHER INFORMATION.

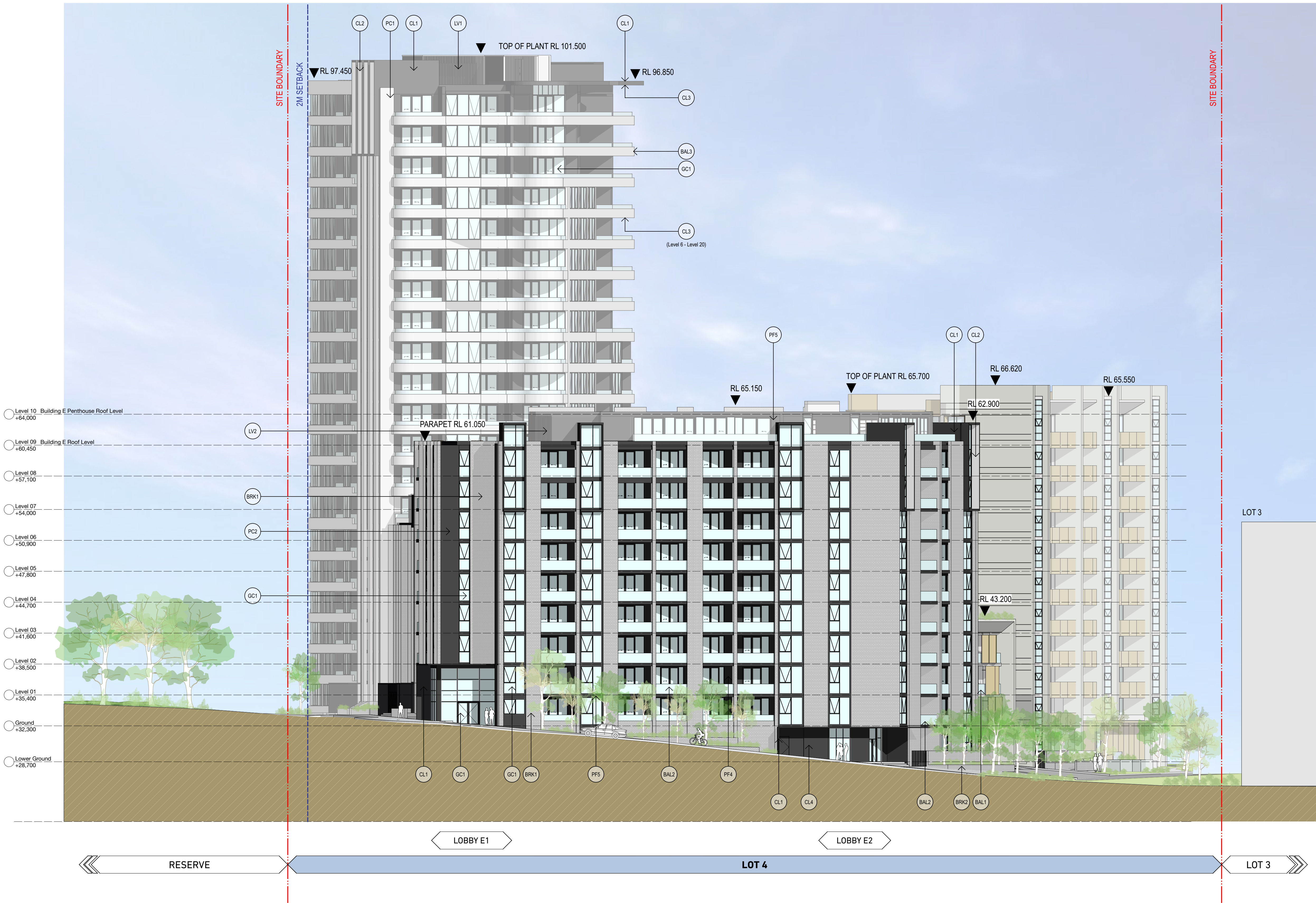
DL25 Quality Endorsed Company ISO 9001:2015, Registration Number 25475
Notified Architect: Nicholas Turner, 8885, AEN 88 064 084 911

Thermal Comfort Specification		
Building Element	Material	Insulation
External Wall	Cavity Brick, Brick-Veneer, Concrete, Heliol	None, R1.0, R1.5*
Internal Wall	Plasterboard on Stud	None
Roof	Concrete	None
Ceiling	Concrete above Plasterboard	None, R2.5*
Floor	Concrete Slab	None, 0.5, 1.0*
Floor Coverings	Carpet to Living and Bedrooms Tiles to Bathrooms and Kitchens	N/A
Windows	Group A Glazed Systems: U-value = 6.7 & SHGC = 0.57, U-value = 5.4 & SHGC = 0.49* Group B Glazed Systems: U-value = 6.7 & SHGC = 0.70, U-value = 5.4 & SHGC = 0.58*	N/A

Draught seals to all external windows and doors

Note: *Please refer to the BASIX Report for the individual insulation requirements of each residential dwelling.

LEGEND



Certificate no.: 0001716160
Assessor Name: Tien Thien Huynh
Accreditation no.: 20887
Certificate date: 24 July 2017



Rev.	Date	Approved by	Revision Notes
S	22.12.16	JM	Development Application
T	22.06.17	JM	Development Application Amendments
U	03.07.17	JM	Development Application Amendments
V	31.08.17	JM	Development Application Amendments

CLIENT
Deicorp
Level 3, 161 Redfern Street, Redfern
NSW 2016, Australia

Project Title WSU - Lot 4 158-164 Hawkesbury Road, 2a Darcy Road Westmead NSW 2145 Australia			
Drawing Title GA Elevations East Elevation			
Scale 1:200 @A1, 50%@A3	Project No. 16001	Drawn by turner	North
Status For Information	Dwg No. DA-210-002	Rev V	

TURNER

L7, ONE Oxford Street
Darlinghurst NSW 2010
Australia
T +61 2 8668 0200
F +61 2 8668 0268
www.turner.com.au

Elevation / Section Legend

- BAL1** Balustrade Type 1:
Semi-Frameless clear glass balustrade.
Framing system, finish similar to PF1
- BAL2** Balustrade Type 2:
Semi-Frameless translucent glass balustrade.
Framing system, finish similar to PF5
- BAL3** Balustrade Type 3:
Semi-Frameless clear glass balustrade fixed to
solid spandrel panel/parapet wall. Framing system,
finish similar to PF1
- BAL4** Balustrade Type 4:
Perforated Architectural metal balustrade. Finish similar to
PF7 + PF8
- BAL5** Balustrade Type 5:
Fixed vertical metal fins. Finish similar to PF8

- BRK1** Brick Type 1:
Face brick similar in colour to Bowral 'Chillingham White'
- BRK2** Brick Type 2:
Glazed face brick to address landscaped areas
Colour similar to Austral Bricks 'Allure-Lulu'
- COF1** Concrete, off form
Clear finish or to landscape architect's specification
- GC1** Glass, Clear, Type 1:
Glass, clear, to Basix and Acoustic report requirements.
Aluminium framing system, finish similar to PF5
- GC2** Glass, Clear, Type 2:
Glass, clear, to Basix and Acoustic report requirements.
Aluminium framing system, finish similar to PF3
- CL1** Cladding Type 1:
Metal cladding, colour similar to PF5

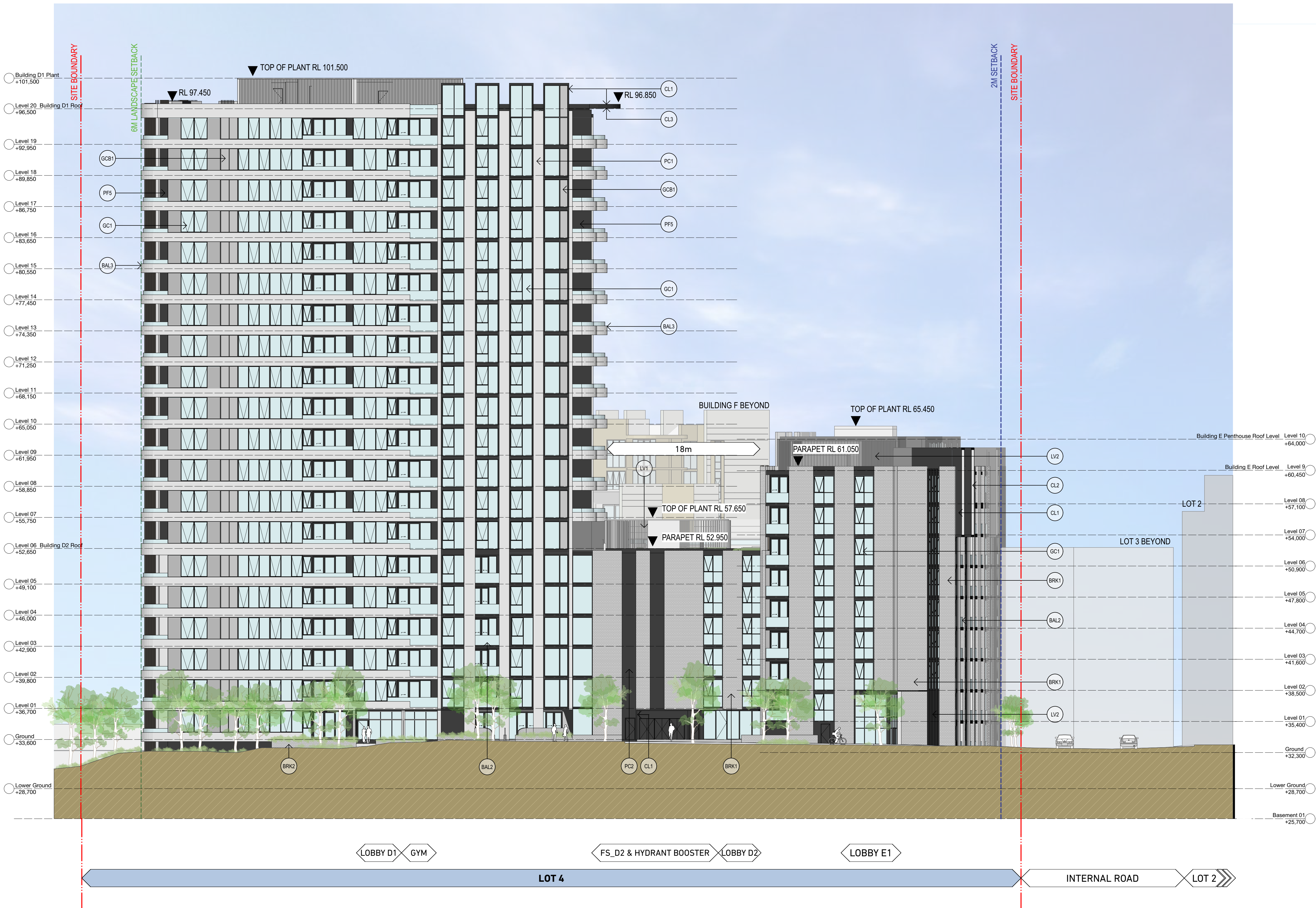
- CL2** Cladding Type 2:
Metal cladding, colour similar to PF2
- CL3** Cladding Type 3:
Timber plastic composite cladding, similar to 'spotted gum'
- CL4** Cladding Type 4:
FC cladding, colour similar to PF4
- CL5** Cladding Type 5:
Metal cladding, colour similar to PF8
- CL6** Cladding Type 6:
Metal cladding, colour similar to PF7
- GT1** Glass, Translucent, Type 1:
Glass, Translucent, to Basix and Acoustic report requirements.
Aluminium framing system, finish similar to PF5

- GT2** Glass, Translucent, Type 2:
Glass, Translucent, to Basix and Acoustic report requirements.
Aluminium framing system, finish similar to PF3
- GCB1** Glass, Colourback, Type 1:
Glass, Dark Grey, to Basix and Acoustic report requirements.
Aluminium framing system, finish similar to PF5
- GCB2** Glass, Colourback, Type 2:
Glass, Dark Grey, to Basix and Acoustic report requirements.
Aluminium framing system, finish similar to PF3
- LV1** Louvre Type 1:
Fixed vertical louvre system. Aluminium, finish similar to PF2
- LV2** Louvre Type 2:
Fixed vertical louvre system. Aluminium, finish similar to PF5
- LV3** Louvre Type 3:
Fixed vertical louvre system. Aluminium, finish similar to PF8

- PC1** Precast Concrete Type 1:
Precast Concrete. Finish: penetrating low maintenance
stain finish equal to Keim concrete Lasur system, similar to PF1
- PC2** Precast Concrete Type 2:
Precast Concrete. Finish: penetrating low maintenance
stain finish equal to Keim concrete Lasur system, similar to PF4
- PC3** Precast Concrete Type 3:
Vertical Profiled Precast Concrete. Finish: penetrating low maintenance
stain finish equal to Keim concrete Lasur system, similar to PF1
- PC4** Precast Concrete Type 4:
Natural Concrete. Finish with horizontal dummy joints
- PF1** Paint Finish Type 1:
Natural White
Finish similar to Dulux 'Natural White'
- PF2** Paint Finish Type 2:
Finish similar to Dulux 'Flat White' powder coat

- PF3** Paint Finish Type 3:
Finish similar to Dulux 'Flooded Gum'
- PF4** Paint Finish Type 4:
Finish similar to Dulux 'Black Caviar'
- PF5** Paint Finish Type 5:
Finish similar to Dulux powder coat 'Black Ace'
- PF6** Paint Finish Type 6:
Finish similar to Dulux 'Harold'
- PF7** Paint Finish Type 7:
Finish similar to Dulux Electro 'scintillation' powder coat
- PF8** Paint Finish Type 8:
Finish similar to Dulux Electro 'Shimmering
Champagne' powder coat

- SC1** Screen Type 1:
Aluminium slat fence, finish similar to PF2
- SC2** Screen Type 2:
Metal louvered screen at mechanical
air intake. Colour to match PF5
- SC3** Screen Type 3:
Metal framed shedding structure with timber battens
- SC4** Screen Type 4:
Vertical aluminium screen, finish to match PF5
- SC5** Screen Type 5:
Metal louvered screen at mechanical
air intake. Colour to match PF1
- SC6** Screen Type 6:
Metal louvered screen at mechanical
air intake. Colour to match PF6



Elevation / Section Legend

- BAL1 Balustrade Type 1: Semi-Frameless clear glass balustrade. Framing system, finish similar to PF1
- BAL2 Balustrade Type 2: Semi-Frameless translucent glass balustrade. Framing system, finish similar to PF5
- BAL3 Balustrade Type 3: Semi-Frameless clear glass balustrade fixed to solid spandrel panel/parapet wall. Framing system, finish similar to PF1
- BAL4 Balustrade Type 4: Perforated Architectural metal balustrade. Finish similar to PF7 + PF8
- BAL5 Balustrade Type 5: Fixed vertical metal fins. Finish similar to PF8

- BRK1 Brick Type 1: Face brick similar in colour to Bowral 'Chillingham White'
- BRK2 Brick Type 2: Glazed face brick to address landscaped areas. Colour similar to Austral Bricks 'Allure-Lulu'
- COF1 Concrete, off form. Clear finish or to landscape architect's specification
- GC1 Glass, Clear, Type 1: Glass, clear, to Basix and Acoustic report requirements. Aluminium framing system, finish similar to PF5
- GC2 Glass, Clear, Type 2: Glass, clear, to Basix and Acoustic report requirements. Aluminium framing system, finish similar to PF3
- CL1 Cladding Type 1: Metal cladding, colour similar to PF5

- CL2 Cladding Type 2: Metal cladding, colour similar to PF2
- CL3 Cladding Type 3: Timber plastic composite cladding, similar to 'spotted gum'
- CL4 Cladding Type 4: FC cladding, colour similar to PF4
- CL5 Cladding Type 5: Metal cladding, colour similar to PF8
- CL6 Cladding Type 6: Metal cladding, colour similar to PF7
- GT1 Glass, Translucent, Type 1: Glass, Translucent, to Basix and Acoustic report requirements. Aluminium framing system, finish similar to PF5

- GT2 Glass, Translucent, Type 2: Glass, Translucent, to Basix and Acoustic report requirements. Aluminium framing system, finish similar to PF3
- GCB1 Glass, Colourback, Type 1: Glass, Colourback, to Basix and Acoustic report requirements. Aluminium framing system, finish similar to PF5
- GCB2 Glass, Colourback, Type 2: Glass, Dark Grey, to Basix and Acoustic report requirements. Aluminium framing system, finish similar to PF3
- LV1 Louvre Type 1: Fixed vertical louvre system. Aluminium, finish similar to PF2
- LV2 Louvre Type 2: Fixed vertical louvre system. Aluminium, finish similar to PF5
- LV3 Louvre Type 3: Fixed vertical louvre system. Aluminium, finish similar to PF8

- PC1 Precast Concrete Type 1: Precast Concrete. Finish: penetrating low maintenance stain finish equal to Keim concrete Lasur system, similar to PF1
- PC2 Precast Concrete Type 2: Precast Concrete. Finish: penetrating low maintenance stain finish equal to Keim concrete Lasur system, similar to PF4
- PC3 Precast Concrete Type 3: Vertical Profiled Precast Concrete. Finish: penetrating low maintenance stain finish equal to Keim concrete Lasur system, similar to PF1
- PC4 Precast Concrete Type 4: Natural Concrete. Finish with horizontal dummy joints
- PF1 Paint Finish Type 1: Natural White. Finish similar to Dulux 'Natural White'
- PF2 Paint Finish Type 2: Finish similar to Dulux 'Flat White' powder coat

- PF3 Paint Finish Type 3: Finish similar to Dulux 'Flooded Gun'
- PF4 Paint Finish Type 4: Finish similar to Dulux 'Black Caviar'
- PF5 Paint Finish Type 5: Finish similar to Dulux powder coat 'Black Ace'
- PF6 Paint Finish Type 6: Finish similar to Dulux 'Harold'
- PF7 Paint Finish Type 7: Finish similar to Dulux Electro 'scintillation' powder coat
- PF8 Paint Finish Type 8: Finish similar to Dulux Electro 'Shimmering Champagne' powder coat

- SC1 Screen Type 1: Aluminium slat fence, finish similar to PF2
- SC2 Screen Type 2: Metal louvered screen at mechanical air intake. Colour to match PF5
- SC3 Screen Type 3: Metal framed shedding structure with timber battens
- SC4 Screen Type 4: Vertical aluminium screen, finish to match PF5
- SC5 Screen Type 5: Metal louvered screen at mechanical air intake. Colour to match PF1
- SC6 Screen Type 6: Metal louvered screen at mechanical air intake. Colour to match PF6

NOTES

THIS DRAWING IS THE COPYRIGHT © OF TURNER. NO REPRODUCTION WITHOUT PERMISSION. UNLESS NOTED OTHERWISE THIS DRAWING IS NOT FOR CONSTRUCTION. ALL DIMENSIONS AND LEVELS ARE TO BE CHECKED ON SITE PRIOR TO THE COMMENCEMENT OF WORK. INFORM TURNER OF ANY DISCREPANCIES FOR CLARIFICATION BEFORE PROCEEDING WITH WORK. DRAWINGS ARE NOT TO BE SCALED. USE ONLY PROVIDED DIMENSIONS. REFER TO CONSULTANT DOCUMENTATION FOR FURTHER INFORMATION.

DL025 Quality Endorsed Company ISO 9001:2008, Registration Number 25475
Notified Architect: Nicholas Turner, 8895, AEN 88 064 084 911

Thermal Comfort Specification		
Building Element	Material	Insulation
External Wall	Cavity Brick, Brick-Veneer, Concrete, Heliol	None, R1.0, R1.5*
Internal Wall	Plasterboard on Stud	None
Roof	Concrete	None
Ceiling	Concrete above Plasterboard	None, R2.5*
Floor	Concrete Slab	None, 0.5, 1.0*
Floor Coverings	Carpet to Living and Bedrooms	N/A
	Tiles to Bathrooms and Kitchens	N/A
Windows	Group A Glazed Systems: U-value = 6.7 & SHGC = 0.57, U-value = 5.4 & SHGC = 0.49*	N/A
	Group B Glazed Systems: U-value = 6.7 & SHGC = 0.70, U-value = 5.4 & SHGC = 0.58*	
Draught seals to all external windows and doors		
Note: *Please refer to the BASIX Report for the individual insulation requirements of each residential dwelling.		

LEGEND



Certificate no.: 0001716160
Assessor Name: Tieg Thien Huynh
Accreditation no.: 20987
Certificate date: 24 July 2017
Dwelling Address: WSU WESTMEAD, NSW 2145
www.nathens.gov.au



Rev.	Date	Approved by	Revision Notes
S	22.12.16	JM	Development Application
T	22.06.17	JM	Development Application Amendments
U	03.07.17	JM	Development Application Amendments

CLIENT
Deicorp
Level 3, 161 Redfern Street, Redfern
NSW 2016, Australia

Project Title
WSU - Lot 4
158-164 Hawkesbury Road, 2a Darcy Road Westmead NSW 2145 Australia

Drawing Title
**GA Elevations
South Elevation**

Scale
1:200 @A1, 50%@A3

Status
For Information

Project No.
16001

Dwg No.
DA-210-003

Drawn by
turner

Rev
U

TURNER

L1, ONE Oxford Street
Darlinghurst NSW 2010
Australia

T +61 2 8558 0200
F +61 2 8558 0288
www.turner.com.au



Elevation / Section Legend

- | | | | | | | | | | | | | | |
|------|---|------|--|-----|--|------|--|-----|---|-----|---|-----|--|
| BAL1 | Balustrade Type 1:
Semi-Frameless clear glass balustrade.
Framing system, finish similar to PF1 | BRK1 | Brick Type 1:
Face brick similar in colour to Bowral 'Chillingham White' | CL2 | Cladding Type 2:
Metal cladding, colour similar to PF2 | GT2 | Glass, Translucent, Type 2:
Glass, Translucent, to Basix and Acoustic report requirements.
Aluminium framing system, finish similar to PF3 | PC1 | Precast Concrete Type 1:
Precast Concrete. Finish: penetrating low maintenance
stain finish equal to Keim concrete Lasur system, similar to PF1 | PF3 | Paint Finish Type 3:
Finish similar to Dulux 'Flooded Gum' | SC1 | Screen Type 1:
Aluminium slat fence, finish similar to PF2 |
| BAL2 | Balustrade Type 2:
Semi-Frameless translucent glass balustrade.
Framing system, finish similar to PF5 | BRK2 | Brick Type 2:
Glazed face brick to address landscaped areas
Colour similar to Austral Bricks 'Allure-Lulu' | CL3 | Cladding Type 3:
Timber plastic composite cladding, similar to 'spotted gum' | GCB1 | Glass, Colourback, Type 1:
Glass, Dark Grey, to Basix and Acoustic report requirements.
Aluminium framing system, finish similar to PF5 | PC2 | Precast Concrete Type 2:
Precast Concrete. Finish: penetrating low maintenance
stain finish equal to Keim concrete Lasur system, similar to PF4 | PF4 | Paint Finish Type 4:
Finish similar to Dulux 'Black Caviar' | SC2 | Screen Type 2:
Metal louvered screen at mechanical
air intake. Colour to match PF5 |
| BAL3 | Balustrade Type 3:
Semi-Frameless clear glass balustrade fixed to
solid spandrel panel/parapet wall. Framing system,
finish similar to PF1 | COF1 | Concrete, off form
Clear finish or to landscape architect's specification
finish similar to PF1 | CL4 | Cladding Type 4:
FC cladding, colour similar to PF4 | GCB2 | Glass, Colourback, Type 2:
Glass, Dark Grey, to Basix and Acoustic report requirements.
Aluminium framing system, finish similar to PF3 | PC3 | Precast Concrete Type 3:
Vertical Profiled Precast Concrete. Finish: penetrating low maintenance
stain finish equal to Keim concrete Lasur system, similar to PF1 | PF5 | Paint Finish Type 5:
Finish similar to Dulux powder coat 'Black Ace' | SC3 | Screen Type 3:
Metal framed shedding structure with timber battens |
| BAL4 | Balustrade Type 4:
Perforated Architectural metal balustrade. Finish similar to
PF7 + PF8 | GC1 | Glass, Clear, Type 1:
Glass, clear, to Basix and Acoustic report requirements.
Aluminium framing system, finish similar to PF5 | CL5 | Cladding Type 5:
Metal cladding, colour similar to PF8 | LV1 | Louvre Type 1:
Fixed vertical louvre system. Aluminium, finish similar to PF2 | PC4 | Precast Concrete Type 4:
Natural Concrete. Finish with horizontal dummy joints | PF6 | Paint Finish Type 6:
Finish similar to Dulux 'Harold' | SC4 | Screen Type 4:
Vertical aluminium screen, finish to match PF5 |
| BAL5 | Balustrade Type 5:
Fixed vertical metal fins. Finish similar to PF8 | GC2 | Glass, Clear, Type 2:
Glass, clear, to Basix and Acoustic report requirements.
Aluminium framing system, finish similar to PF3 | CL6 | Cladding Type 6:
Metal cladding, colour similar to PF7 | LV2 | Louvre Type 2:
Fixed vertical louvre system. Aluminium, finish similar to PF5 | PF1 | Paint Finish Type 1:
Natural White
Finish similar to Dulux 'Natural White' | PF7 | Paint Finish Type 7:
Finish similar to Dulux Electro 'scintillation' powder coat | SC5 | Screen Type 5:
Metal louvered screen at mechanical
air intake. Colour to match PF1 |
| | | CL1 | Cladding Type 1:
Metal cladding, colour similar to PF5 | GT1 | Glass, Translucent, Type 1:
Glass, Translucent, to Basix and Acoustic report requirements.
Aluminium framing system, finish similar to PF5 | LV3 | Louvre Type 3:
Fixed vertical louvre system. Aluminium, finish similar to PF8 | PF2 | Paint Finish Type 2:
Finish similar to Dulux 'Flat White' powder coat | PF8 | Paint Finish Type 8:
Finish similar to Dulux Electro 'Shimmering
Champagne' powder coat | SC6 | Screen Type 6:
Metal louvered screen at mechanical
air intake. Colour to match PF6 |

NOTES

THIS DRAWING IS THE COPYRIGHT © OF TURNER. NO REPRODUCTION WITHOUT PERMISSION. UNLESS NOTED OTHERWISE THIS
DRAWING IS NOT FOR CONSTRUCTION. ALL DIMENSIONS AND LEVELS ARE TO BE CHECKED ON SITE PRIOR TO THE COMMENCEMENT
OF WORK. INFORM TURNER OF ANY DISCREPANCIES FOR CLARIFICATION BEFORE PROCEEDING WITH WORK. DRAWINGS ARE NOT TO
BE SCALED. USE ONLY FIGURED DIMENSIONS. REFER TO CONSULTANT DOCUMENTATION FOR FURTHER INFORMATION.

DL25 Quality Endorsed Company ISO 9001:2008, Registration Number 25475
Notorised Architect: Nicholas Turner, 8885, ARIA BL 664 084 911

Thermal Comfort Specification		
Building Element	Material	Insulation
External Wall	Cavity Brick, Brick-Veneer, Concrete, Heliol	None, R1.0, R1.5*
Internal Wall	Plasterboard on Stud	None
Roof	Concrete	None
Ceiling	Concrete above Plasterboard	None, R2.5*
Floor	Concrete Slab	None, 0.5, 1.0*
Floor Coverings	Carpet to Living and Bedrooms Tiles to Bathrooms and Kitchens	N/A
Windows	Group A Glazed Systems: U-value = 6.7 & SHGC = 0.57, U- value = 5.4 & SHGC = 0.49*	N/A
	Group B Glazed Systems: U-value = 6.7 & SHGC = 0.70, U- value = 5.4 & SHGC = 0.58*	

Draught seals to all external windows and doors
Note: *Please refer to the BASIX Report for the individual insulation requirements of each
residential dwelling.

LEGEND



Certificate no.: 0001716160
Assessor Name: Tien Thien Huynh
Accreditation no.: 20887
Certificate date: 24 July 2017
Dwelling Address: WSU WESTMEAD, NSW 2145
www.nathers.gov.au

Rev.	Date	Approved by	Revision Notes
S	22.12.16	JM	Development Application
T	22.06.17	JM	Development Application Amendments
U	03.07.17	JM	Development Application Amendments
V	31.08.17	JM	Development Application Amendments

CLIENT
Deicorp
Level 3, 161 Redfern Street, Redfern
NSW 2016, Australia

Project Title
WSU - Lot 4
158-164 Hawkesbury Road, 2a Darcy Road Westmead NSW 2145 Australia
Drawing Title
**GA Elevations
West Elevation**
Scale
1:200 @A1, 50%@A3
Status
For Information
Project No.
16001
Drawn by
turner
North
Dwg No.
DA-210-004
Rev
V

TURNER
L1, ONE Oxford Street
Darlinghurst NSW 2010
Australia
T +61 2 8668 0200
F +61 2 8668 0268
www.turner.com.au